

The Brodick

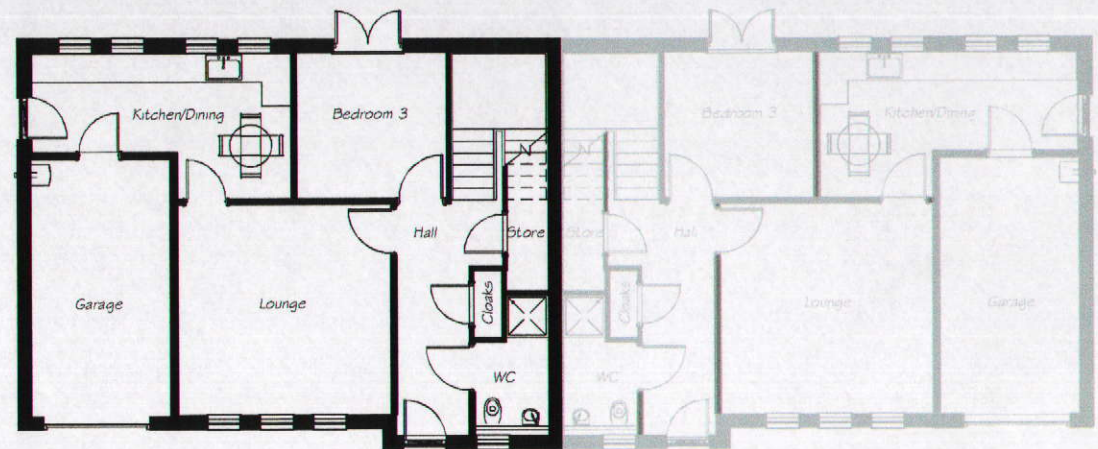
3 Bedroom Semi Detached Villa

MERIDIAN
HOMES TO BE PROUD OF



The spacious 3 bedroom home offers unrivalled value for money.

The wonderfully high specification throughout includes en suite to master bedroom and fitted wardrobes.



Ground Floor

Lounge	4.48m x 4.55m	14'7" x 14'9"
Kitchen/Dining	5.54m x 3.11m	18'2" x 10'2"
Bedroom 3	3.11m x 3.21m	10'2" x 10'5"
Garage	5.48m x 2.98m	18'0" x 9'8"
WC	3.00m x 1.59m	9'8" x 5'2"

Upper Floor

Master Bedroom	3.39m x 5.22m	11'1" x 17'1"
En Suite	2.90m x 1.34m	9'5" x 4'4"
Bedroom 2	3.37m x 4.06m	11'0" x 13'3"
Bathroom	3.79 x 3.25m	12'4" x 10'6"



Typical Meridian Interiors

